

Quality. Safety. Confidence.

**RUBBERHOG**<sup>®</sup>



**Oliver**  
Carbide Products Inc.

7445 Mayer Road · Cottrellville, MI 48039

P: (810) 765-1000 · F: (810) 765-7000

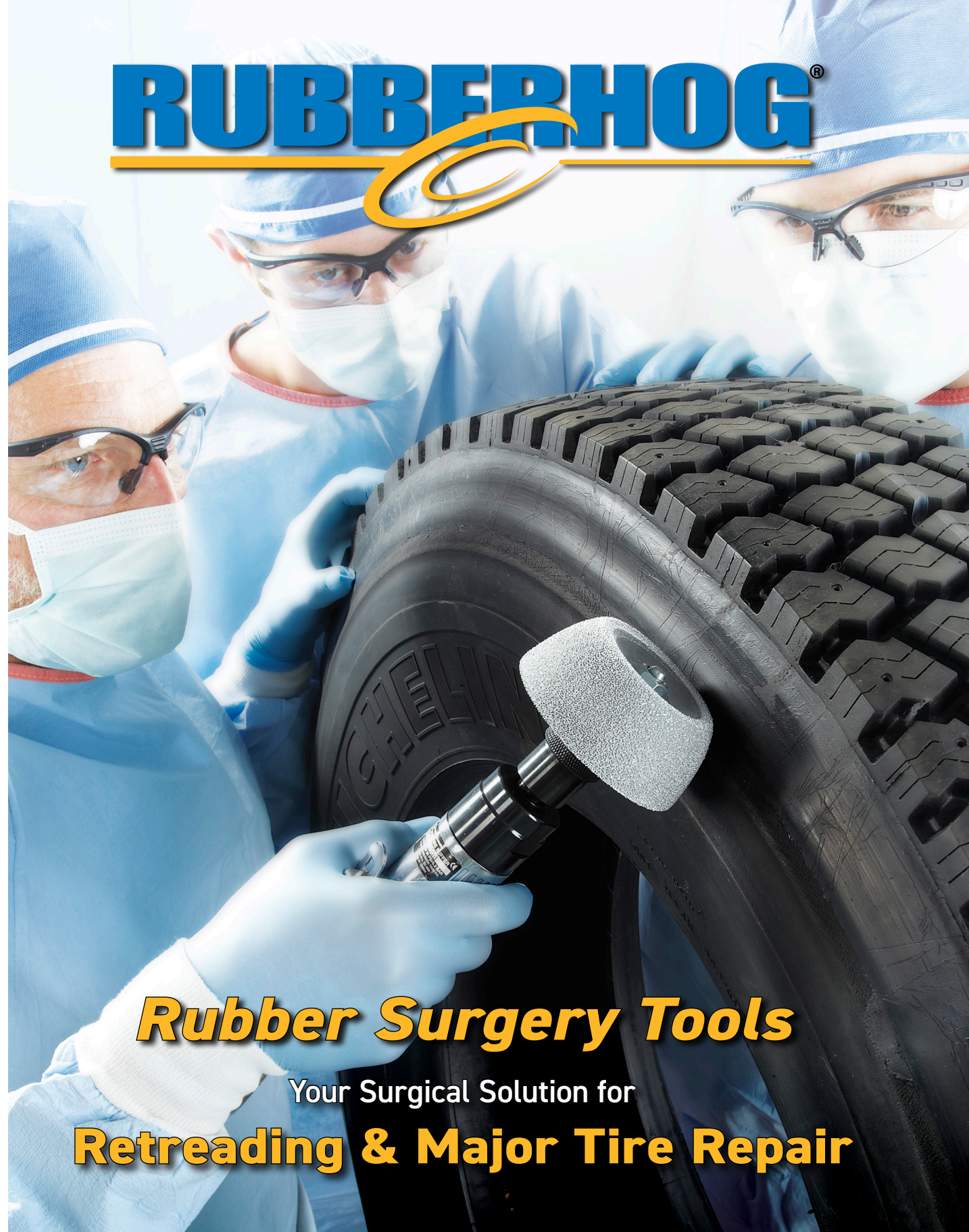
[www.Olivercorp.com](http://www.Olivercorp.com)

[www.Rubberhog.com](http://www.Rubberhog.com)



1023

**RUBBERHOG**<sup>®</sup>



**Rubber Surgery Tools**

Your Surgical Solution for

**Retreading & Major Tire Repair**

**RUBBERHOG**<sup>®</sup>

**Trust.**

When a life is on the line, it's trusted the surgeon isn't sacrificing safety.

Every decision becomes critical to ensure the absolute best in quality and care.

When trust is in your hands, rely on what others have for over 40 years.

**Rubber Surgery Tools.**

- Superior buffed textures, for better bond strength
- Provides the highest quality rubber repairs
- Recommended by repair experts worldwide



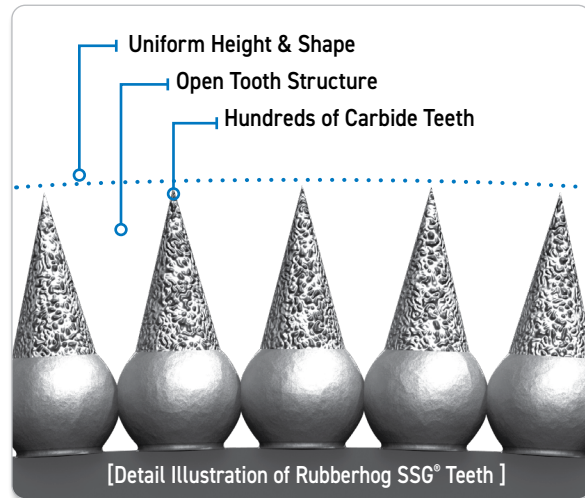
[www.Rubberhog.com](http://www.Rubberhog.com)



## Better Technology. Safer Repair.

Featuring innovations from the leader in the industry, Rubberhog Original SSG 'structured teeth' use the best technology to ensure peace of mind.

- Buffs cooler, no scorching.
- Greater bond strength, for a safer repair.
- Faster material removal, saving operating time.
- Fantastic wear life, costing you 30% less per repair.

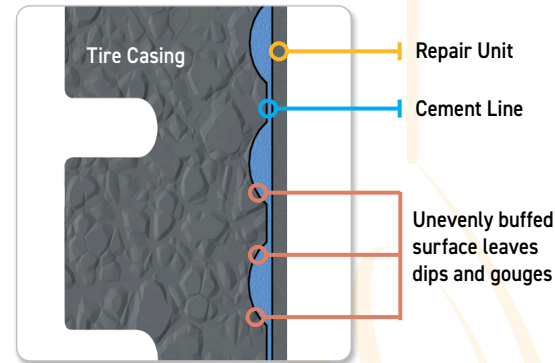
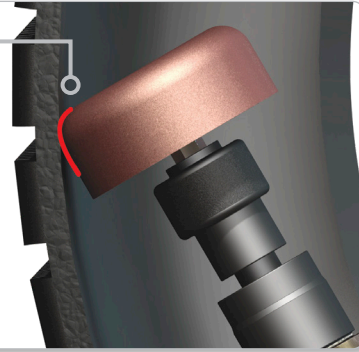


**3X-5X the life**  
of standard copper-grit tools!

## ▶ Competitor [Performance Drawbacks]

### ■ Flawed Shape

Most low-end buffing tools do not properly match the shape of the tire.

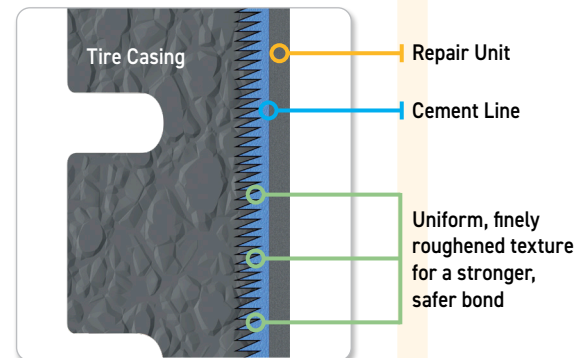


## ▶ Rubberhog [Superior Performance Design]

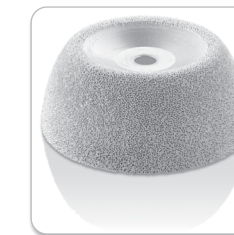
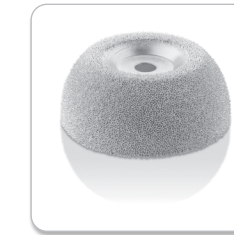
### ■ Unique Profile

Flared Contour Wheels properly match the shape of the tire.

- Provides wide, level contact with surface.
- Efficient use of the entire tool.
- Easier to use - less operator fatigue.
- Reduced buffing time.



## ▶ Flared Contour Wheels



- Proven Rubberhog widely-flared shapes are versatile for both interior and exterior buffing.
- Remove material quickly while providing a superior bonding surface.
- Easily smooth and blend exterior repairs.
- Ideal for Light Truck through Commercial Truck, Agricultural, and OTR.

### ■ 2-1/2" Diameter x 3/8" Bore

Part No.	Coating	Workstation	Application
107 [Shown]	Fine (170)	Repair	Buffing Inner Liner
109	Medium (230)	Repair	Buffing Inner Liner
111	Coarse (390)	Repair	Buffing Inner Liner Removing Old Repairs

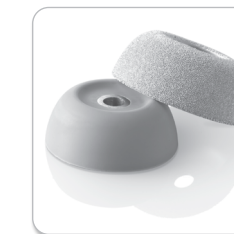
### ■ 3" Diameter x 3/8" Bore

Part No.	Coating	Workstation	Application
112	Fine (170)	Repair	Buffing Inner Liner
		Final Inspection	Cushion Overflow
114 [Shown]	Medium (230)	Repair	Buffing Inner Liner
		Final Inspection	Cushion Overflow
116	Coarse (390)	Repair	Buffing Inner Liner Removing Old Repairs
		Skiving	Buffing Low Shoulders
		Final Inspection	Sidewall Repairs

### ■ 3-1/2" Diameter x 3/8" Bore

Part No.	Coating	Workstation	Application
118	Fine (170)	Repair	Buffing Inner Liner
		Final Inspection	Cushion Overflow
120	Medium (230)	Repair	Buffing Inner Liner
		Final Inspection	Cushion Overflow
122 [Shown]	Coarse (390)	Repair	Buffing Inner Liner Removing Old Repairs
		Skiving	Buffing Low Shoulders
		Final Inspection	Sidewall Repairs

## ▶ PolyPlugs



### ■ Performance-enhancing Inserts

- Compensates for mounting inaccuracies.
- Improves wheel life, and protects from damage.
- Reduces vibration for smoother, quieter, more comfortable operation.
- Reusable!

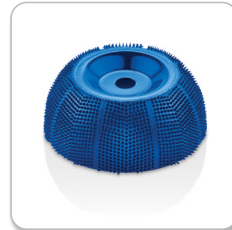
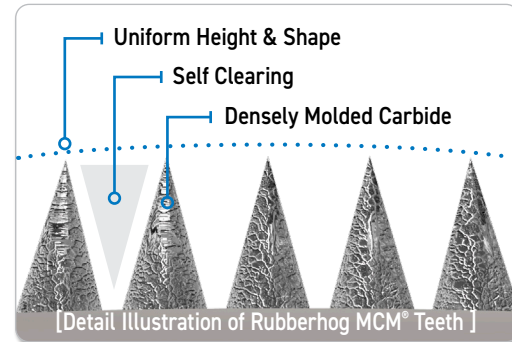
Part No.	Diameter	Bore
152	2-1/2"	3/8"
154	3"	3/8"
156	3-1/2"	3/8"

## e[X]treme Flared Contour Wheels

### Take tire repair to the e[X]treme!

These wheels feature Rubberhog Extreme MCM 'structured teeth', to tackle the tough jobs. This includes heavy buffing and texturizing for section repair and OTR work.

- Fastest rubber-removal rate.
- Coollest cutting.
- Highest resistance to loading.
- Longest wear-life



### 3" Diameter x 3/8" Bore

Part No.	Coating	Workstation	Application
114X	Medium [MCM 70]	Repair	Repair installation & removal
		Skiving	Texturizing low shoulders
		Final Inspection	Sidewall repairs
116X	Coarse [MCM 90]	Repair	Repair removal
		Skiving	Texturizing low shoulders
		Final Inspection	Sidewall repairs

### 3-1/2" Diameter x 3/8" Bore

Part No.	Coating	Workstation	Application
120X	Medium [MCM 70]	Repair	Repair installation & removal
		Skiving	Texturizing low shoulders
		Final Inspection	Sidewall repairs
122X	Coarse [MCM 90]	Repair	Repair removal
		Skiving	Texturizing low shoulders
		Final Inspection	Sidewall repairs

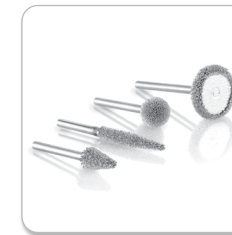
## 1/4" Shaft Tools



- Spheres, Tapers & Rotor Saw are excellent for high-tread skiving.
- Smaller Spheres chamfer around nail punctures on liner; don't take a chance on entrapped air!!
- Nail Hole Reamers are for bias tires.

Part No.	Shape	Diameter	Coating
601 [Shown Top]	Sphere	5/8" [15.8mm]	Coarse [330]
603		7/8" [22.2mm]	
605		1-1/8" [28.5mm]	
611 [Shown Second]	Taper	5/8" [15.8mm]	
613		7/8" [22.2mm]	
619 [Shown Third]	Rotor Saw	1-3/8" [34.9mm]	
626 [Shown Bottom]	Nail Hole Reamer	1/4" [6.3mm]	

## 1/8" Shaft Tool Kit



- Combines four versatile shapes.
- For very small repairs and detailing.

Part No.	Shape	Diameter	Coating
635	Long Taper	1/8" [3.1mm]	Fine [170]
	Short Taper	1/4" [6.3mm]	
	Sphere	3/8" [9.5mm]	
	Rotor Saw	3/4" [19mm]	

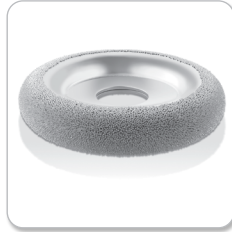
## Rotary Knife Blades



- Cut and texture ends of pre-cured tread.
- Fit popular tread builders.
- Long-Lasting!

Part No.	O.D.	Bore	Coating	Application
100-GEG-134 100-GEG-134-80	6" [152.4mm]	1-3/4" [44.4mm]	150 Grit 80 Grit	Salisbury and Oliver builders
100-GEG-138 100-GEG-138-80	6" [152.4mm]	1-3/8" [34.9mm]	150 Grit 80 Grit	Cahill builders
100-GEG-200 100-GEG-200-80	6" [152.4mm]	2" [50.8mm]	150 Grit 80 Grit	Bandag model 5110, most Matuzzi builders
200-GEG	7" [177.8mm]	32mm	150 Grit	Michelin builders

## ▶ Retreading Sidewall Wheels



- For shoulder and sidewall preparation, on manual or automatic buffers.
- Fast and effective removal of oxidized rubber; used with or without wire brushes.
- Provides a uniform texture, maximizing rubber-to-rubber bond strength.
- Excellent durability, reducing your cost-per-buff.

Part No.	Description	O.D.	Bore	Coating	Application
129 [Shown Top]	Contour Wheel	4" [101.6mm]	3/4"	Coarse [390]	Bandag 8200
708 [Shown Middle]	Donut Wheel	6" [152.4mm]	1-1/2"	Coarse [390]	Matteuzzi*, etc.
708-50			50mm	Coarse [390]	Some TRM, etc.
707-50			50mm	Very Coarse [460]	
705 [Shown Bottom]	Wide Donut Wheel	6" [152.4mm]	38mm	Coarse [390]	Matteuzzi** and Salisbury**
711	Donut Wheel	8" [203.2mm]	60mm	Coarse [390]	Some TRM/Marangoni

\*Automatic buffers, and original fitment on manual swing pedestal.

\*\*For manual swing pedestal; requires conversion kit.

## ▶ Buzzouts



- Free cutting and long-lasting, with fully rounded profile.
- Fast removal on high tread repairs, or skiving bias tires.
- Excellent for shaping/texturing section repairs.
- Not recommended for contact with steel cord.

Part No.	O.D.	Bore	Width	Coating
300	2" [50.8mm]	3/8"-24	1/4" [6.3mm]	Fine [230]
302			1/4" [6.3mm]	Coarse [390]
304			3/8" [9.5mm]	Fine [230]
306			3/8" [9.5mm]	Coarse [390]
308			1/2" [12.7mm]	Fine [230]
310 [Shown]			1/2" [12.7mm]	Coarse [390]
312			3/4" [19mm]	Fine [230]
314			3/4" [19mm]	Coarse [390]

## ▶ High-Performance Sidewall Discs

These angle-grinder discs offer a more efficient alternative when working on larger high-tread repairs and section repairs. The wide, semi-flat shape covers more area.

- Fit popular pneumatic or electric angle grinders.
- More precise control, by using a two-handed grip.
- Easily smooth, texturize, or rapidly remove rubber.
- Cool operation, and long life.



Disc Wheel Profile



Part No.	O.D.	Bore	Coating	Color
SD4120230 [Shown First]	4-1/2" (114mm)	7/8" [22.2mm]	Fine [230]	Gold
SD412X70			Medium [MCM 70]	Teal
SD412X90			Coarse [MCM 90]	Blue
SD412X120 [Shown Second]			Very Coarse [MCM 120]	Black
1160	7" (178mm)		Coarse [390]	Silver
1160XV			Very Coarse [MCM 120]	Black