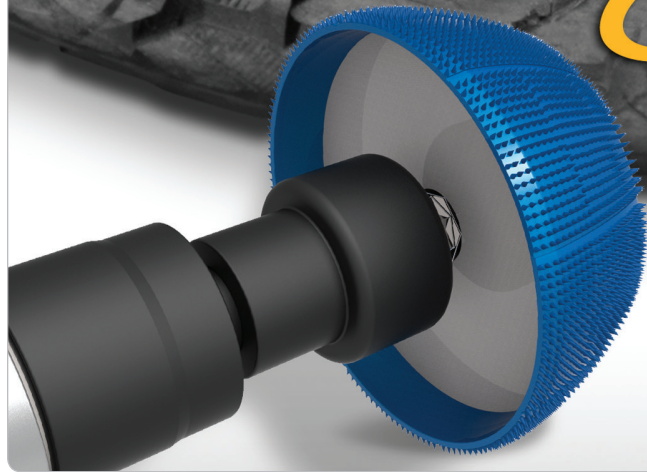


# RUBBERHOG®

New Product Bulletin



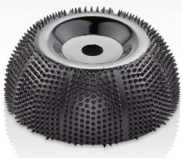
e[X]treme

## Flared Contour Wheels

### ▶ Typical applications [Extreme Black]

- Repair removal
- Section repair
- Post-rasp texturing of low spots along edge of crown (skiving station)
- Clean-up of sidewall repairs (final inspection)

116X



122X

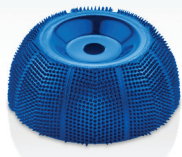


Part No.	Diameter	Bore	Coating
116X	3" [76.2mm]	3/8"	Coarse [MCM 90]
122X	3-1/2" [88.9mm]	3/8"	Coarse [MCM 90]

### ▶ Typical applications [Extreme Blue]

- Installing repairs, where a moderately rougher texture is acceptable or desired (for example, OTR repairs).
- Finishing of repairs on sidewalls

114X



120X



Part No.	Diameter	Bore	Coating
114X	3" [76.2mm]	3/8"	Medium [MCM 70]
120X	3-1/2" [88.9mm]	3/8"	Medium [MCM 70]

### ■ Take tire repair to the e[X]treme!

Back by popular demand, Rubberhog Extreme Flared Contour Wheels are the fastest-working, longest lasting tire repair buffing tools made.

- Using Rubberhog's Proven Flared Shape
- Compatible with Exclusive PolyPlug Accessories

### ■ Featuring: Extreme MCM carbide teeth!

- Uniform Height & Shape
- Open Arrangement
- Hundreds of Sharp Carbide Teeth
- Densely Molded Structure

### ■ Benefits:

- Most Aggressive
- Highest Resistance to Loading
- Fastest Material Removal Rate
- Extremely Long Wear-Life

