

## Wheel Replacement Guide

The Rubberhog SSG® technology generates exceptional wear life. People find themselves asking:

*“How can I tell when these things wear out?”*

### ▶ New



### ▶ Worn

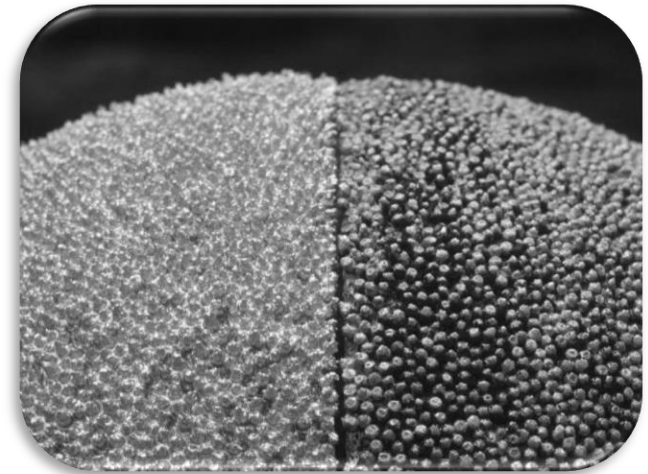


### ▶ Good Wheels

- New wheels have very sharp teeth.
- The sharp points of these teeth are visible.
- You can feel the bite when rubbing with your fingers.
- Very little heat is created while buffing.

### ▶ Bad Wheels

- Worn wheels display teeth that are rounded/ broken and shiny.
- Lost aggressiveness; much less bite when rubbing with fingers.
- May have heavy rubber build-up within the teeth.
- High generation of heat and smoke.



New vs. Worn



Worn teeth are broken/  
rounded and shiny.



A worn out buffing wheel of any kind may cause risk of repair failure! Worn wheels can scorch the rubber, preventing the repair from bonding properly.

Rubberhog wheels in good condition produce the absolute safest and highest quality repair. Replace when wear is visible.